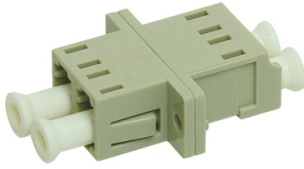


Product data sheet

Specifications



LC duplex adaptor, Actassi, multi mode, zirconia ceramic sleeve, plastic housing

ACTFA2LMMZP

⚠ Discontinued on: 6/07/2017

⚠ Discontinued

Main

Range	Actassi
Product Or Component Type	Multi-mode adaptor
Colour	Housing: beige

Complementary

Fibre Performance	OM3 OM4
Connector Type	LC duplex
Material	Zirconia: ferrule Plastic: housing
Fixing Mode	Snap-in Screw
Targeted Region	Asia Pacific. Europe

Packing Units

Unit Type Of Package 1	PCE
Number Of Units In Package 1	1
Package 1 Height	0.93 cm
Package 1 Width	2.2 cm
Package 1 Length	2.93 cm
Package 1 Weight	5.6 g

Contractual warranty

Warranty	18 months
----------	-----------

Disclaimer: This documentation is not intended as a substitute for and is not to be used for determining suitability or reliability of these products for specific user applications

Sustainability

Green Premium™ label is Schneider Electric's commitment to delivering products with best-in-class environmental performance. Green Premium promises compliance with the latest regulations, transparency on environmental impacts, as well as circular and low-CO₂ products.

Guide to assessing product sustainability is a white paper that clarifies global eco-label standards and how to interpret environmental declarations.

[Learn more about Green Premium >](#)

[Guide to assess a product's sustainability >](#)



Transparency RoHS/REACH

Well-being performance

Reach Free Of Svhc

Toxic Heavy Metal Free

Mercury Free

Rohs Exemption Information Yes

Certifications & Standards

Reach Regulation

[REACH Declaration](#)

Eu Rohs Directive

Compliant

[EU RoHS Declaration](#)

China Rohs Regulation

[China RoHS declaration](#)

Pro-active China RoHS declaration (out of China RoHS legal scope)

Environmental Disclosure

[Product Environmental Profile](#)

Weee

The product must be disposed on European Union markets following specific waste collection and never end up in rubbish bins

Circularity Profile

No need of specific recycling operations