

Pieno

Push the Boundaries



Pieno, a switch that pushes the boundaries, for the big hearted and the open-minded.



Wiring Accessories Ranges

ZENcelo



The Full-Flat form factor has redefined many facets in life. Aeroplane seats. TVs. Mobile phones. Electric stoves.....and now switches.

Aesthetically pleasing flat switches are in fact available. But only exclusive to luxurious electronic switches and lighting automation systems. Even on switches you never imagined can be Full-Flat...

NEO C-Metro



When you choose NEO, you can be sure of a level of quality and safety that is simply second to none. The first mechanical switch to offer LED locaters, which gives off a uniquely enticing soft glow that tells you exactly where each switch is located at night. Revolutionary horizontal dollies round off an outstanding example of cutting edge ingenuity which will always appeal to those wishing to stay ahead of changing trends.

Vivace



Inspired by the influential Bauhaus movement, Vivace expresses a pleasing form follows function. With a slim and trim profile, the sleek clean lines and subtle curves manifest an art of simple, elegant minimalism.

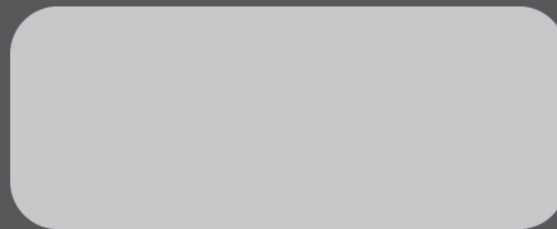
Vivace, a style of modern simplicity that is always within your reach.

E-Series



E Series has been setting the standard, with design features like impact resistant polycarbonate components, modular designed mechanisms and multigang capabilities.

E-Series switches and sockets are tough, resilient, built to take hard knocks and guaranteed to provide exceptional product life.



for more information please contact Clipsal Pakistan (Pvt) Ltd.



UAN: (9221) 111-081-081

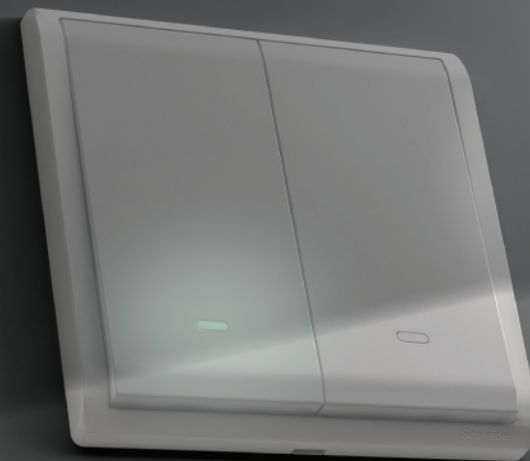
Email: info@clipsal.com.pk

Web: www.clipsal.com.pk

Pieno

Push the Boundaries

Wiring Devices



Uncluttered design with
distinctive **jumbo dolly**



Flush Switches

Cat. No.	Description
E8231L1F20	16AX/20A 1 Gang 1 Way Switch with FL
E8231L2F20	16AX/20A 1 Gang 2 Way Switch with FL
E8232L1F20	16AX/20A 2 Gang 1 Way Switch with FL
E8232L2F20	16AX/20A 2 Gang 2 Way Switch with FL
E8233L1F20	16AX/20A 3 Gang 1 Way Switch with FL
E8233L2F20	16AX/20A 3 Gang 2 Way Switch with FL
E8234L1F	10AX 250V 4 Gang 1 Way Switch with FL
E8234L2F	10AX 250V 4 Gang 2 Way Switch with FL
E8231BPL1	10A 250V 1 Gang Bell Press Switch with FL
E8231D20N	20A 250V 1 Gang Double Pole Switch with Neon



E8231L1F20 E8232L1F20 E8233L1F20 E8234L1F E8231BPL1



E8231D20N

FL = Fluorescet Locator

Dimmer & Fan Control Switches

Cat. No.	Description
E8230/250F	1 Gang 250VA Fan Speed Controller
E8230/400L	1 Gang 400W Light Dimmer



E8230/250F E8230/400L

Flush Plates and Accessories

Cat. No.	Description
E8230X	1 Gang Blank Plate
E8231X	1 Gang Blank Plate with 30M Hole
E8232X	2 Gang Blank Plate with 30M Hole



E8230X E8231X E8232X

Sockets Outlets

Cat. No.	Description
E8215_5N	5 Amp Switched Socket with Neon
E8215_15N	15 Amp Switched Socket with Neon
E8215	13 Amp Switched Socket
E8215N	13 Amp Switched Socket with Neon
E82T25	13 Amp Twin Gang Switched Socket
E8215_US	10 Amp Switched Universal Socket
E82426_16S	16 Amp Schuko Socket



E8215 E8215N E82T25 E8215_15N E82426_16S E8215_5N E8215_US

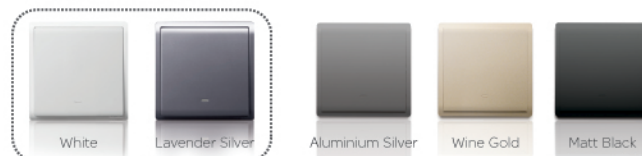
Telecommunication Accessories

Cat. No.	Description
E8231TV	1 Gang TV Socket
E8232TV	2 Gang TV Socket
E8231RJS4	1 Gang Telephone Socket, Shuttered Wallplate
E8232RJS4	2 Gang Telephone Socket, Shuttered Wallplate
E8231RJS_5	1 Gang RJ45 Data Outlet, Cat5e, Shuttered Wallplate
E8232RJS_5	2 Gang RJ45 Data Outlet, Cat5e, Shuttered Wallplate
E8231RJS_6	1 Gang RJ45 Data Outlet, Cat6 Shuttered Wallplate
E8232RJS_6	2 Gang RJ45 Data Outlet, Cat6 Shuttered Wallplate



E8231TV E8232TV E8231RJS4 E8232RJS4 E8231RJS_5 E8232RJS_5 E8231RJS_6

Feel the colours of Life!



White Lavender Silver Aluminium Silver Wine Gold Matt Black

Hotel Accessories

Cat. No.	Description
E8231BPDMW	10A 250V 1 Gang Bell Switch with Illuminated "Privacy", "Please Clean Up" & "Please Wait" Symbols
E8233DMWS	16AX 3 Gang Switch with Neon with "Privacy", "Please Clean Up" & "Please Wait" Symbols
E8231EKT	16A 250V Electronic Key Card Switch with Time Delay
E82T727H	115V/240V Universal Shaver Unit, Horizontal
E82T727V	115V/240V Universal Shaver Unit, Vertical



E8231BPDMW E8233DMWS E8231EKT E82T727V



E82T727H

Patented **design** with dollies and surround **integrated into one piece** to **improve aesthetic integrity** as well as installation **quality** and **efficiency**.

>> Uncluttered design



Circular base design

Pieno's circular base design can easily fit into the common 60mm diameter wall opening for a faster and more convenient installation in false walls or furniture.



Top quality

Made of corrosion resistant, heat resistant, and impact resistant polycarbonate IEC, BS, SS, MS, GB, CCC and/or IS compliant All RoHS compliant